



THE LUXURY TRAVELLING LOO COMPANY

Panelled Loo System

Ivory

The Panelled system uses laminated or veneer panels to build a room within a building or a structure creating a home from home bathroom. Clients may provide their own walling or select from IGLOOS® range of wall panel colours.

- Images show IGLOOS Ivory walls which is the Company's main stock colour and is enhanced with dark granite skirting and scotia.
- Contemporary glass bowl basins.
- Individual natural wood framed mirrors.
- Other basins and mirrors are available.
- The flexibility of the system means that the exact number of cubicles, urinals and the hand basins can be selected depending on the nature of the event and number of guests.
- The loo pans may operate on a vacuum system or fresh water flush.

Installing temporary loos in a permanent building is a solution that is not often considered; yet it is possible and it can render otherwise unusable spaces as tenable options. For example, if loos are required in a basement for a party or on the first floor of a hotel for a conference, the IGLOOS® Panelled Loo System, provides the solution.

The Panelled Loo System is not only used for exclusive areas, it is also installed for general public loos. The materials chosen for the panels, the floor covering and the type of hand basin supplied very much determines the style of the room. See the product cards for **Roca Basins** and **General Public Area** for further details.

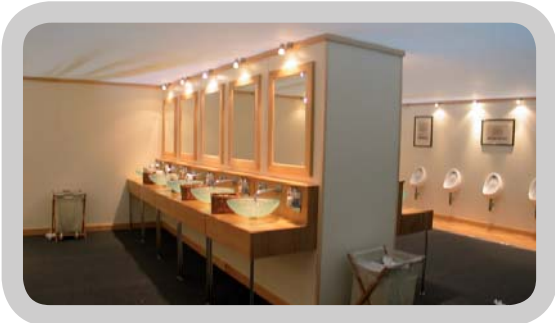
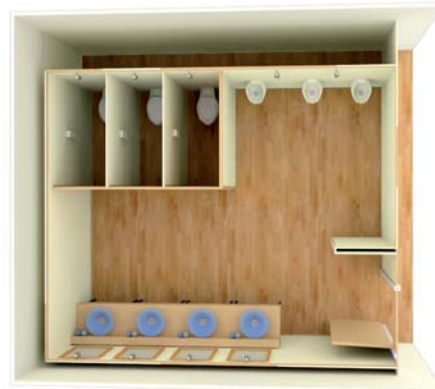
Individual disabled loo rooms can be built with appropriate fixtures such as grab rails, lever taps and an alarm. See the product card for **Disabled Loo Room** for more details.

The various options available for this system can be discussed at the time of quotation.

Requirements for Operation

- The Panelled Loos need to be installed inside a building or structure.
- Constant power supply is required for installation and during the event which varies according to the quantity of stock.
- Constant fresh water supply with good pressure for installation and during the event. The fresh water is necessary for both the hand basins and loo pans and occasionally the urinals if they are on a flushing system.
- Waste is either collected in vacuum tanks or the system is plumbed into the mains drainage.

Sample Layouts



...beautiful loos ...beautiful events